

Under One Roof

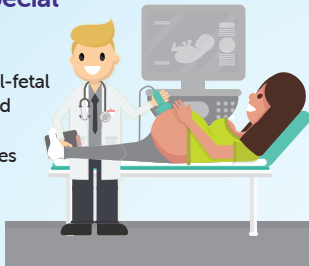
MemorialCare Miller Children's & Women's Hospital Long Beach houses a level IV birth care center under the same roof as a full-service children's hospital, including a level IV Neonatal Intensive Care Unit (NICU). This makes us one of only a few children's hospitals in California to offer this level of care for moms and babies under one roof – complete with all private rooms.

We ensure the highest quality care for maternity and neonatal patients throughout the region – so everyone can get the specialized care they need.

When a mom and baby come to Miller Children's & Women's, they have access to health care unique to their individual needs.

3 Perinatal Special Care Unit

24/7 in-house maternal-fetal medicine specialists and neonatologists to care for complex pregnancies and deliveries



4 Level IV Regional NICU

Highest designation from the American Academy of Pediatrics to care for the sickest, smallest babies



5 Small Baby Program

Care for babies in a serene environment that mimics the womb – largest program of its kind in the region



2 Comprehensive Maternity Program

More than 5,000 families trust Miller Children's & Women's to safely deliver their babies each year in private rooms throughout the birthing experience



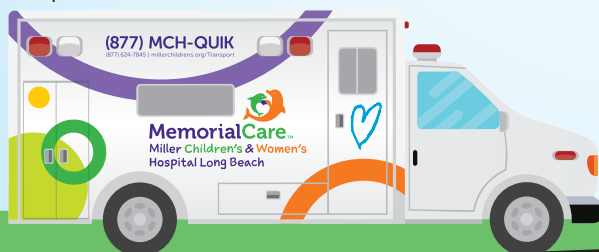
6 Breastfeeding Support

Designated Baby-Friendly birth facility dedicated to assisting moms with their breastfeeding goals



1 Access & Transport Center

Prenatal and neonatal transport program available 24/7 with specialty-trained transport care team



Meet the Team on the Back →



Meet the Comprehensive Team

Caring for a mom and baby requires a specialized care team.



Maternal-Fetal Medicine Specialist (Perinatologist)

An obstetrician that completes three extra years of training to care for high-risk pregnancies, and at Miller Children's & Women's oversees complex deliveries.



Neonatologists

A pediatrician with specialized training in the care of premature and critically ill newborns.



OB Hospitalist

OB hospitalists are solely dedicated to treating women for obstetrical issues, most often labor.



OB/GYN

A physician that specializes in women's reproductive health and offers pre- and post-natal care.



Neonatal Hospitalist

A board-certified pediatrician dedicated to the care of newborn infants in the delivery room, Postpartum Care Unit and NICU, ensuring we have someone in house to support you 24/7.



Psychologist

A medical professional who works with families to deal with the stressors of the NICU environment.



Registered Nurse

Registered nurses (RN) are specially trained to care for women with routine and high-risk pregnancies, as well as full-term and premature infants.



Lactation Consultant

A board-certified nurse who has advanced training in breastfeeding management, including NICU babies and moms.



Social Worker

A professional who provides counseling services to families and assists with emotional, psychological and social support as need.



Neonatal Dietitian

A registered dietitian (RD) with training and experience in planning nutrition for premature and critically ill babies, who ensures they receive adequate calories, protein and essential nutrients to grow.



Supportive/ Palliative Care

A professional who provides a holistic approach to an infant's care, providing an extra layer of physical, social and spiritual support. These professionals will help to assure the best quality of life possible for babies and their families.



Chaplain

A pastor who is available for families to provide them with spiritual assistance.

